



# The Beacon

WINTER/SPRING  
2009

The New England District Lutheran Women's Missionary League Newsletter

*Carol Sokofski, Editor*

## NED HEADS FOR PORTLAND



### FROM THE PRESIDENT

"Our Northwest LWML sisters (and brothers) are definitely rolling out the "Purple Carpet" for us in Portland - June 25-28, 2009 for the 33<sup>rd</sup> Biennial Lutheran Women's Missionary League Convention."

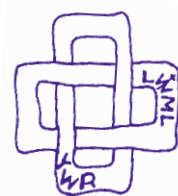
*[Read President Lynn's INVITATION on page 2]*

### FROM NEW ENGLAND'S YOUNG WOMAN REP -- SAGE BROWNE



I recently checked out the convention website. Reading through the convention schedule, I got really excited about experiencing all of the listed activities firsthand. I am especially looking forward to the opportunities I will have to meet other women and to worship and study Scripture with them. I know that I will be inspired by their passion for and commitment to missions. Being among so many others with this unity of purpose is going to be amazing. I look forward to hearing about all of the mission grants proposals and will take pride in knowing that my mites, along with all those other LWML women, are making an impact on these praiseworthy recipients.

It is my prayer that I will be able to capture the excitement in the Portland Convention Center and carry it back home. From my previous experiences at National Youth Gatherings, I know how wonderful it is to be reminded that I am part of a larger church body--a perspective that is hard to grasp in New England sometimes. I hope that this event will deepen my personal commitment to missions and, through my sharing, will encourage others.



**Sage**

**LWML Convention**  
**Portland, Oregon**  
**June 25-28, 2009**



# AN INVITATION FROM THE PRESIDENT

*"I lift my eyes to the hills – where does my help come from -  
My help comes from the Lord, the Maker of heaven and earth." Psalm 121:1-2 NIV*



Our Northwest LWML sisters (and brothers) are definitely rolling out the "Purple Carpet" for us in Portland - June 25-28, 2009 for the 33<sup>rd</sup> Biennial Lutheran Women's Missionary League Convention. I hope many of you can join me. I was in Portland at the end of January for a Board of Director's meeting and experienced the enthusiasm and the love that these women have for their Lord. They are so excited about sharing God's love with their sisters and brothers in Christ.

However, the bigger issue they are excited about is bringing God's love to an unchurched part of our nation. Portland is 75% unchurched. Imagine the potential impact of thousands of "purple ladies" running around the city living and sharing the Good News! WOW! God needs all of us there to share His love with the lost souls, AND we can have a blast doing it !

If you have never been to a convention, I can tell you it is a life-changing event. Please open your heart to hear if God is calling you to Portland. I know your life will be changed, and God will use you to change others also.

*"How beautiful on the mountains are the feet of those who bring good news, who proclaim peace, who bring good tidings, who proclaim salvation, who say to Zion, "Your God reigns!"*

Isaiah 52:7 NIV

## SHE-ME-HE

She = teen girl,  
Me = Mentor,  
He = Jesus

There will be a special plated dinner for teen girls and their mentors at the convention. The girls and their mentors will be treated like princesses with a special presentation and a surprise for each of them. If you know of any teens under 18, make sure they are signed up for this fantastic event!

## PASTOR LIEBICH LOOKS TOWARD PORTLAND:

I feel so blessed that as the Junior Counselor I get to attend the National Convention in Portland, OR. This trip will be my first time to Oregon, and for that matter any one of the states on America's west coast! Even more exciting to me than the place, is all the people. We always joke about how small the world is in the LCMS, and this will be one of those opportunities to see if I can find someone who knows my mother's sister's cousin's neighbor whom I knew 25 years ago. I love those conversations! More seriously, it will be a wonderful opportunity to make new friends and hear about the church at large as we celebrate God's reign advancing in such a way that the gates of hell cannot prevail against it. And there is no doubt in my mind that it will be a celebration! I look forward to the worship and singing as we are carried along by the Holy Spirit. Thank you so much for giving me this opportunity to attend as your Junior Counselor





# O Holy Wisdom From On High

**LWML New England District Retreat**  
November 7-8, 2008 ~ Crowne Plaza, Enfield, CT

Rev. Dien Taylor, Pastor of Redeemer Lutheran Church, Bronx, NY was presenter and Bible study leader for the 2008 retreat. Pastor Taylor involved us in ...



...study, discussion, laughter ....



... and of course, singing!



O come, Thou Wisdom from on high,  
Who ord'rest all things mightily;  
To us the path of knowledge show,  
And teach us in her ways to go.  
Rejoice! Rejoice!!  
Emmanuel shall come to thee, O Israel!  
[public domain]



President Lynn Batchelder (l) presents Dorothy Weise with a pin identifying her as a Past District President.

Counselor Jonathan Liebich closes Friday's session with his measuring tape. It served as a reminder of our Creator's wisdom when God asks Job about laying the earth's foundation, "Who stretched a measuring line across it?"

(Job 38:5 NIV)



R  
E  
T  
R  
E  
A  
T  
  
R  
E  
F  
L  
E  
C  
T  
I  
O  
N  
S



Exuberant smiles from first-time retreat attenders.



A special LWML gift was presented to each newcomer.



As always, the candy table proved most popular -- and proceeds went for mites, which along with book sales and offering, totaled over \$1900.

SHOPPING!

Susan Dow (far right) helps shoppers at the Concordia Publishing House display. Many returned home supplied with materials for Bible study, outreach, and encouragement.



CRAFTS

Intense concentration is needed when learning to make beautiful wire angels.



PURPLE POCKET PROJECT FOR MITES



Is YOUR purple pocket steadily filling up?

# CHATting WITH PASTOR TAYLOR ...



***Beacon:** Besides presenting at our NED retreats, you have also been active at retreats and conventions for several other districts as well as at national conventions. Why do you feel it is so important for you to participate at these events?*



L-R: Nancy Fischer, Christian Life Chairman; Pastor Taylor; Delberta Novicki, VP-Christian Life; Lynn Batchelder, President

**Pastor Taylor:** "Christ our Lord has gifted us generously with life. His suffering, death, resurrection, ascension, and return direct our eyes to those gifts that He brings to us in Word and Sacraments. He has gifted me. I am His. Where He leads me, I shall go. I have been honored to serve the LWML, despite my own shortcomings and unworthiness. I am also thankful to be in a parish that allows me to serve others throughout Christ's Holy Church. The LWML seeks to serve Christ; I am humbled by each opportunity I receive to encourage people as they do that."



Pastor Taylor gets us singing -- with attitude!

*Among your many gifts, our Lord has given you the gifts of music and humor. How do you see these gifts as enhancing your preaching/teaching ministry?*

"God gives us all gifts to be used for His work. I am thankful for all the gifts He gives His Holy Church. Whatever I have is because of what He has given me. My desire is to use whatever I have for the proclamation of the Gospel of Jesus Christ. Prayerfully, all the gifts He gives me can direct people to our Lord--the Gift Giver--and His incredible and often surprising extravagant love and grace."



Delberta and Pastor pause for a picture as they ready for the retreat opening.

*What would you say to a woman who has never attended a district retreat or a convention either at the district or national level?*



"God has gifted you. He has much more to give you. Go to a district retreat or a convention and be encouraged by Him in the company of others. You cannot live your faith alone; we need each other. Make the sacrifices, change your schedule and take the plunge. You have much to gain and little to lose. When you go, you will be encouraged in the faith; and you will be a vessel of encouragement for others, too."



## INGATHERING: Old jewelry in good condition and/or personal care items for Central Food Ministry, Lowell, MA

A big huge thank you to all the LWML ladies who donated jewelry at the retreat making you a partner in the Central Food Ministries' Jewelry Project. The children who come to the annual Christmas party get to select a piece of jewelry for their mother. They are so delighted! I wish you could see their faces as they pour over the jewelry to select just the "right" piece for Mom. What amazes me is how important it is to the young boys that they get the right color, the right piece, and the way they take the time to write their names on the name tags.

This was our third year, and the children still can't get over the fact that this is free to them. Their faces say it all, and I am privileged to sit with them, along with the other women helping, and to be a part of this ministry that the Lord put on me to do.

Since the jewelry project is so popular, we have added "Mothers Day" and Valentines Day" when the jewelry is presented on a tray the day the clients come in, and the women can select something for themselves. They, too, are very touched by this act of making them feel special. (However, I do save the best of the jewelry for the children's selection.)

So THANK YOU again for your support. God's blessings to you for your donations.

*Janet Guenther*



The retreat concluded at the Lord's Table where we tasted the True Wisdom and received His forgiveness and strength of faith for our journey home to serve in His name.







## Won't you stop and think about serving in the New England District?

- ✓ Are you thinking you would like to help the New England District?
- ✓ Could you see yourself working on the NED Board in some capacity?
- ✓ Take a moment to look at the openings.
- ✓ Read the explanation of what a specific office entails.

Note: Transportation can be provided to meetings, this should not stop you.

### 2010 New England District Executive Committee Offices to be filled are:

#### Vice President Christian Life

The Christian Life Committee encourages active participation in spiritual development programs, plans retreats and workshops for lay training in Kingdom work, as well as presenting suggestions and offering advice for conducting Spiritual Life programs on district, zone and organization levels.

#### Vice President Gospel Outreach

Gospel Outreach is responsible for presenting proposed mission projects for selection at convention and accepting and distributing college scholarships, short term mission scholarships, and mission grant projects. Our goal is to support missions that are local, national and foreign.

#### Treasurer

Keep an itemized account of all receipts and disbursements. Make all payments authorized by Executive Committee. Supply Mite Boxes.

#### Pastoral Counselor

Serve the LWML-NED in advisory capacity and attend LWML-NED conventions and meetings of Executive Committee and Board of Directors as non-voting member.

#### Nominating Committee

Recruit nominees who are active members of their local organizations and zones. Submit slate with resumes to Executive Committee and prepare ballots; list names alphabetically and distribute ballots to delegates before voting at convention.

If interested, notify the Nominating Committee.

Gail Milke and Nancy Lutz -- [Nominations@LWML-NED.org](mailto:Nominations@LWML-NED.org)

### **Human Care is God in Action through YOU!**

Human Care is God in Action through YOU! It's about how you treat others—and that should be with thoughtful care and compassion. You bet it's about those quilts you and your sisters design and stitch and send along to Lutheran World Relief. And absolutely it's about a church volunteering to help rebuild houses after a hurricane or a group marking (and praying over) Bibles for the prison ministry.

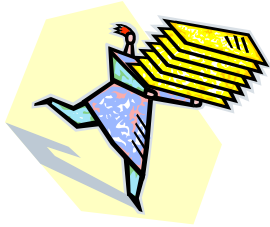
But did you stop and think about yourself? Human Care is also about how you care for YOU! And about how you—by yourself—care for others.

If you don't take care of yourself, how are you able to care for others? And know that you don't always need a group of people to make a difference in the lives of others. There are the quiet small gestures that can mean so much.

It's the well-timed card you send. It's the smile on your face while others grimace (the grocery store?). It's making yourself available for listening to someone who needs to talk over their problem.

*(Continued on page 11)*





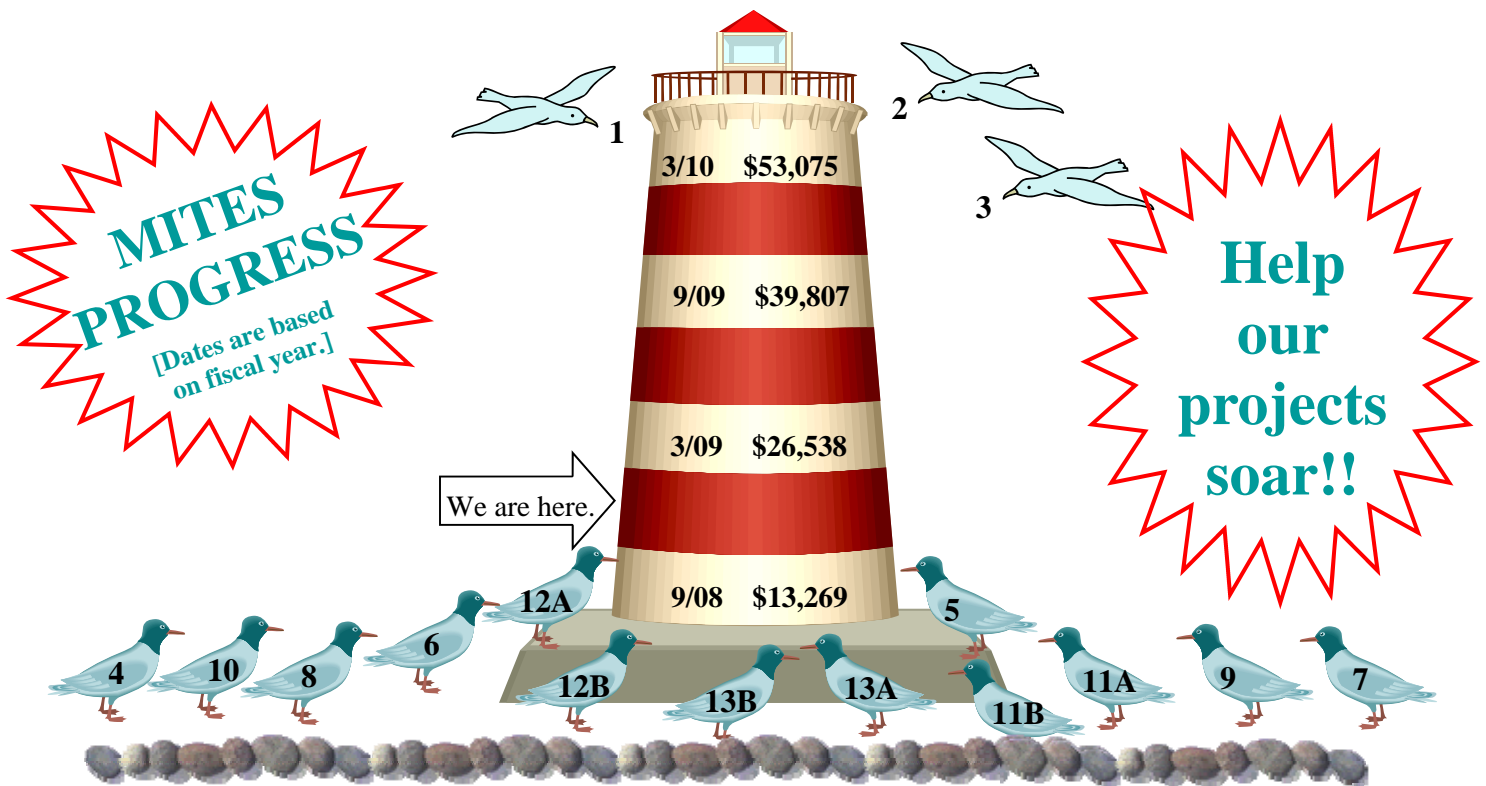
## Applications and Deadlines!!!

Applications and deadlines: Those are my two key words this time of year.

- ✦ Do you have someone from your congregation attending a synodical university or seminary in the fall of 2009? Make sure they have an **application** for an LWML-NED scholarship! You can get a copy of the application from me or from Pass It On (Volume 1 No 8). The **deadline** is June 15, 2009.
- ✦ Do you have someone from your congregation with a mission opportunity coming up in the next couple of years? This is the time to be thinking about an LWML-NED mission grant for our 2010-2012 biennium. Contact me for the guidelines and **application**. The **deadline** to submit a grant proposal is September 30, 2009.
- ✦ Do you have someone from your congregation going on a short-term mission trip this year? Make sure they have an **application** for an LWML-NED Short-Term Mission Scholarship! Contact me for an application. There is no **deadline** for these!

Together in Christ!

*Janice Mathieu*, LWML-NED Vice President-Gospel Outreach



A complete list of mite projects may be found on [www.LWML-NED.org](http://www.LWML-NED.org)





**“Be strong and courageous. Do not be terrified; do not be discouraged, for the Lord your God will be with you wherever you go.” Joshua 1:9**

## COUNSELOR’S



CORNER

Greetings, Lutheran Women in Mission,

What an honor and joy it is to address you for the first time in the Beacon as your Junior Pastoral Counselor! Not that I particularly enjoy talking about myself, but I thought that for this first article I would share with you a little bit about myself and how I have come to be in this place in my life.

I am what some would refer to as, “a product of the system.” My father, Dennis Liebich, was a DCE in Toledo, Ohio, when I was born. Shortly after, my family moved to St. Louis where dad began training to become a pastor. It was a fun time for me,

hard work for my dad, and even harder work for my mom, who taught school to support us and gave birth to my brother. I was four years old when he was born, and my parents asked me what I wanted to name him. I said, “Goliath,” to which they replied, “We like that story, but let’s go with ‘David’ instead.”

Dad’s first call was to start a mission congregation in St. Charles, MO, where we stayed for the rest of my “growing up years.” I attended Lutheran Elementary School and then Lutheran High School in St. Charles. Upon graduation from I attended Concordia University in Seward, NE where I met Rebecca Buescher; we married the summer after graduation before beginning at Concordia Seminary in St. Louis. Becky worked hard to support us during the next four years, teaching and nannying. We now live in Colchester, CT, and I serve as pastor at Christ Lutheran in Hebron where I also vicared during Pastor Ralph Sackschewsky’s last year before retirement. Our son, Benjamin, just turned two.

The question I’m asked most frequently, besides, “How old are you?—You look so young,” is, “When did you know you wanted to be a pastor?” Honestly, this is a hard question for me. I didn’t have a Damascus road experience like Paul. I can’t remember any particular life changing moment when I suddenly realized this is what the Lord wanted me to do. Instead, I had the constant encouragement of family and friends. I

have not always known, nor would I be honest if I said I never questioned the decision after it was made. Yet, I thank and praise God for bringing me to this place in my life. Sharing the Good News of Jesus Christ and helping people as they struggle to live each day in faith toward God and love for one another is a wonderful calling.

I close by directing you to the passage printed above from Joshua. My pastor (my dad!) chose this as my Confirmation verse. The Lord spoke these words to Joshua when he had some huge shoes to fill and some giant deeds to accomplish, but they have been a great source of comfort to me and I pray that they are to you as well. It brings me such relief to know that as I carry out the tasks of my calling, as I face hardships, challenges, victory, and defeat, God is there with me! I am never alone, even when I feel alone. And this is true both in life and in death. Jesus is Immanuel, God with us, and we usually think of this in connection to Christ’s conception and birth. I also like to think of this as we enter Lent. He is with us in our sin, death, and condemnation, so that we can be with Him in His resurrection and eternal life. He is truly with us always, and we will always be with Him. So, be strong and courageous! I thank God for the opportunity we have to encourage one another to be strong and courageous Christians, men and women in mission. The Lord be with you!

Peace in Christ, Rev. Jonathan Liebich



Around the

# Z-Z-Zones!

## Mt. Laurel Zone

This past August, the women of Christ Lutheran LWML, Niantic, CT, packed 25 school backpacks and delivered them to Care and Share, a charitable organization in the area. Items for the backpacks were brought in by the 100+ children who attended VBS the week before and included such items as notebook, paper, ruler, pencils, pens, small and large colored markers, crayons, glue sticks, and scissors. The LWML group purchased the backpacks for elementary, middle, and high school students while the youth group placed a hand-written note inside each backpack along with a Bible passage and a prayer for a successful school year.



The back packs were gratefully received by the Care and Share staff!

## Mid-Valley & Mt. Laurel Joint Gathering

### *Witnessing to the Sanctity of Human Life*

Our Lord's sacrifice is a promise of eternal life! Learn how contemporary issues such as abortion and stem cell research are compromising earthly life.

*Witnessing to the Sanctity of Human Life: Lutherans for Life;  
Bioethics in Life Issues; Post-abortive Healing and Support*

**Sunday, April 19, 2009**

Everyone is welcome! Bring a friend!

This Lutheran Women in Mission (LWML) rally presents Lutherans for Life national speaker Jean Amundson at **St. Matthew's Lutheran Church**, 99 Franklin Square, **New Britain, CT**. **Registration begins at 2pm**. The program begins at 2:30; a light supper follows the program.

Those attending are asked to **support Birthright** with a **donation of diapers**, wipes, or clothing for a child under 12 months. Each society (or church) is asked to bring a **side dish to share** at supper.



## Koinonia Zone



The Koinonia Zone held its fall gathering October 25th at Christ the King Lutheran Church in Newtown, CT, with the theme *Church Music*. On that Saturday we began with “Songs of Praise the Angles Sang.” Kelly Berger, Director of the Children’s Music program at Christ the King, taught us the children’s songs and led us as we all sang along. Piper Ken Fay showed us the intricate parts of a bagpipe, the familiar clothing worn and their origin. With his music, he gave us a better understanding of the bagpiper.



Together we shared the Bible study *Music: A Gift from God for God* led by Pastor Robert Beinke who walked us through the Bible from Job through the Psalms and beyond. The study showed us how God’s people sing of His works for them and how we are taught through this medium. This gift of music as Luther states “is an outstanding gift of God and next to theology...Music is an endowment and a gift of God, not a gift of men...” Our day was full of song, uplifting, friendly and *Praising the Lord*. We joined together for luncheon and went on our way “with song in our heart.”

Gail Milke, Zone President

Koinonia Zone will host its Spring Gathering on Sunday, April 19, 2009 at Good Shepherd Lutheran Church in New Fairfield, CT. Our guest speaker will be Kay Finley who will speak of her years in Guatemala and the work of the Lutheran Bible Translators worldwide. We will begin our program with registration at 2 PM; dinner will be served following the program. All are invited!

(Continued from page 7)

It's the person you choose to be every day, outside the cover of your church crowd.

It's this more personal sense of Human Care that I've been moved to write about on the LWML-NED website. Things that have touched me and that I want to share. My current article is about a hugely important medical test that people will do everything to avoid (yet make fun of it and worry about!). I've tried to paint a true picture while giving strong encouragement.

My prior article was about deciding to and preparing for walking a fundraising marathon (26.2 miles) for cancer research and treatment.

I'll put up a new essay as the Spirit moves me—which I'm hoping will be at least 4 or 5 times a year. So I encourage you to check it out at [www.lwml-ned.org](http://www.lwml-ned.org) and then click on the Human Care link on the left.

Know of sisters who aren't on the computer? Take a minute and print a copy for them. Remember, it's God in Action through YOU!

*Cindy Zattch*, VP Human Care



# New England District 2008-2010

## Executive Committee & Board of Directors

**CHRISTIAN LIFE DEPT.**  
*Vice President — Christian Life*  
 Delberta Novicki  
 ChristianLife@LWML-NED.org

*Christian Life Committee Chairman*  
 Nancy Fischer  
 ChristianLife@LWML-NED.org

**GOSPEL OUTREACH DEPT.**  
*Vice President — Gospel Outreach*  
 Janice Mathieu  
 GospelOutreach@LWML-NED.org

*Mission Advocacy & Grants  
 Committee Chairman*  
 Kathy Schnitger  
 Missions@LWML-NED.org

**HUMAN CARE DEPT.**  
*Vice President — Human Care*  
 Cindy Zattich  
 HumanCare@LWML-NED.org

*Human Care Committee Chairman*  
 Eila Eagle  
 HumanCare@LWML-NED.org



**District President**  
 Lynn Batchelder  
 President@LWML-NED.org

**Recording Secretary**  
 Ellen Gillon  
 Secretary@LWML-NED.org

**Treasurer**  
 Sharon Dever  
 Treasurer@LWML-NED.org

**Pastoral Counselor—Senior**  
 Rev. Robert F. Schipul  
 SrCounselor@LWML-NED.org

**Pastoral Counselor — Junior**  
 Rev. Jonathan Liebich  
 JrCounselor@LWML-NED.org

**Nominating Committee Chairman**  
 Gail Milke  
 Nominations@LWML-NED.org

### ZONE PRESIDENTS

**Eastern Zone President**  
 Leslie Colligan  
 EasternZone@LWML-NED.org

**Koinonia Zone President**  
 Gail Milke  
 KoinoniaZone@LWML-NED.org

**Mid-Valley Zone President**  
 Doreen Wiese  
 Mid-ValleyZone@LWML-NED.org

**Mountain Laurel Zone President**  
 Barbara Lis  
 MtLaurelZone@LWML-NED.org

**Northern Zone President**  
 Kathy Schnitger  
 NorthernZone@LWML-NED.org

**SERVANT RESOURCES DEPT.**  
*Vice President — Servant Resources*  
 Sherlene Skov  
 ServantResources@LWML-NED.org

*Leader Development Committee*  
 Lisa Nolan  
 LeaderDevelopment@LWML-NED.org

*Structure Committee*  
 Pat Kablitz  
 Structure@LWML-NED.org

*Young Women Committee*  
 Madison Schachter  
 Becky Durfee  
 YWC@LWML-NED.org

**APPOINTED PERSONNEL**  
*Archivist-Historian*  
 Betsy Gorneau  
 Archivist-Historian@LWML-NED.org

*LWML Quarterly Chairman*  
 Althea Pattison  
 Quarterly@LWML-NED.org

*Mission-Ministry Vision  
 Facilitator (MMV)*  
 Dorothy Weise  
 MMV@LWML-NED.org

*Parliamentarian*  
 Gail Smuda  
 Parliamentarian@LWML-NED.org

**COMMUNICATIONS COMMITTEE**  
*Public Relations Co-Chairmen*  
 Donna Gruel  
 Tricia Connery  
 PublicRelations@LWML-NED.org

*Beacon Editor*  
 Carol Sokofski  
 Beacon@LWML-NED.org

*Web Servant*  
 Lisa Nolan  
 Webservant@LWML-NED.org

